



## 先进的硅酸盐陶瓷 解决方案

## Innovative Solutions using Silicate Ceramics



#### 先进的解决方案

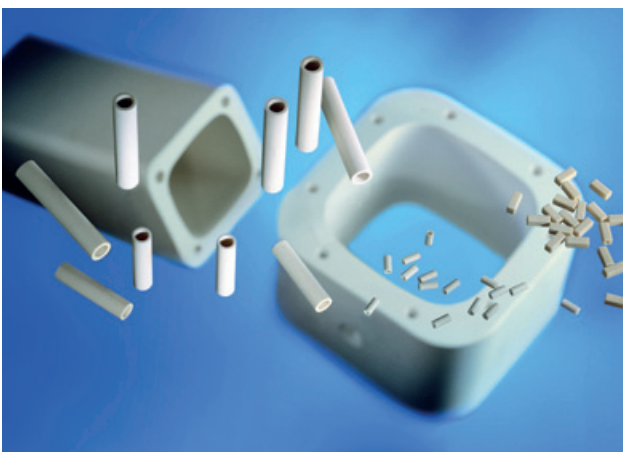
- 可靠的电绝缘性
- 低热导率
- 极低且可微调的热膨胀系数
- 高强度
- 复杂的几何构型
- 相比其他陶瓷材料可达到的更严格的公差
- 出色的性价比

#### INNOVATIVE SOLUTIONS

- reliable electrical insulation
- low thermal conductivity
- minimized and tunable coefficient of thermal expansion
- high strength
- challenging geometries
- tighter tolerances compared to other ceramic materials
- excellent value for money

## 应用领域/产品

## Applications/Products:



#### 电子保险丝和断路器

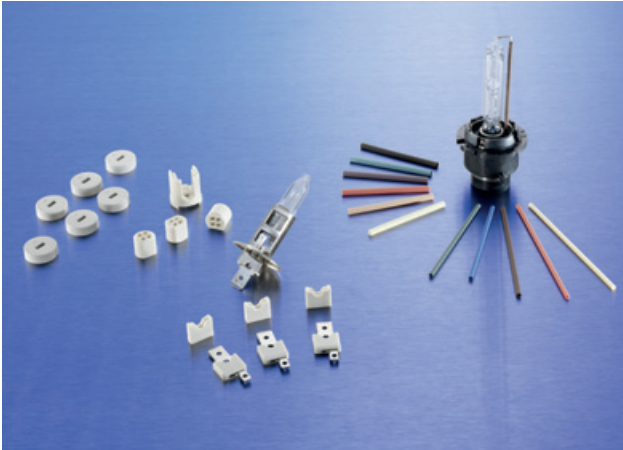
- 管状和贴片型保险丝管体
- 高性能低压型保险丝的绝缘体
- 高性能高压型保险丝的载体
- 塑料封壳中抵挡电弧放电的绝缘弧板

#### Electronic Fuses and Circuit Breaker

- Tubes and SMT fuse bodies
- Insulator bodies for low-voltage high-performance fuses
- Fuse carriers for high-voltage high-performance fuses
- Arc plates for the insulation of plastic enclosures against arc discharge

## 应用领域/产品

## Applications/Products:



### 汽车工业

- 卤素灯的壳体和基体部分
- 汽车氙气灯的绝缘管和基体部分
- 辅助供热系统中温度传感器的绝缘部分
- 瓷盘、绝缘端子以及其他基体部分

### Automotive

- Sockets and system parts for halogen lamps
- Insulation tubes and system parts for automotive HID-lamps
- Insulation parts for temperature sensors for auxiliary heating systems
- Discs, insulators, and other system parts



### 绝缘和温控科技

- 恒温调节器的限幅器管
- 恒温器的基座 (外壳)
- 电气 (电子) 开关的绝缘零件
- 端子基座
- 用于高频电场的绝缘端子

### Insulating and Temperature Control Technology

- Limiter tubes for thermostats
- Thermostat bases ( housings)
- Insulating components for electrical switches
- Terminal bases
- Insulators in high frequency electric fields



### 射频技术的支座绝缘

- 陶瓷支座绝缘端子的一个显著优势是其在射频领域中的低功率损耗。Frequenta材料的高强度 (弹性模量为 120,000N/mm) 在一些格外要求精度的领域中被广泛认可。它的电学参数, 尤其是高绝缘能力, 赋予了陶瓷支座绝缘端子绝佳的性能。

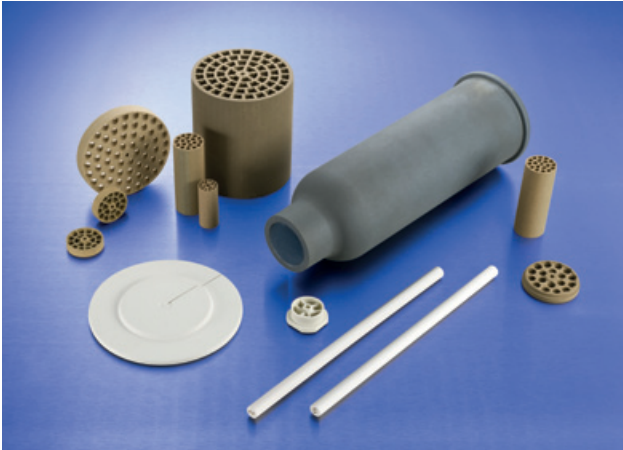
### Standoff Insulators for Radio Frequency

- A distinguish feature of ceramic standoff Insulators is the low power loss in the radio frequency field. The high strength of the material Frequentia (E-module 120,000N/mm) is highly recognized in many applications where precision is of particular interest. The electrical values, in particular the high insulating capacity give the ceramic standoff insulators excellent properties.



# 应用领域/产品

## Applications/Products:

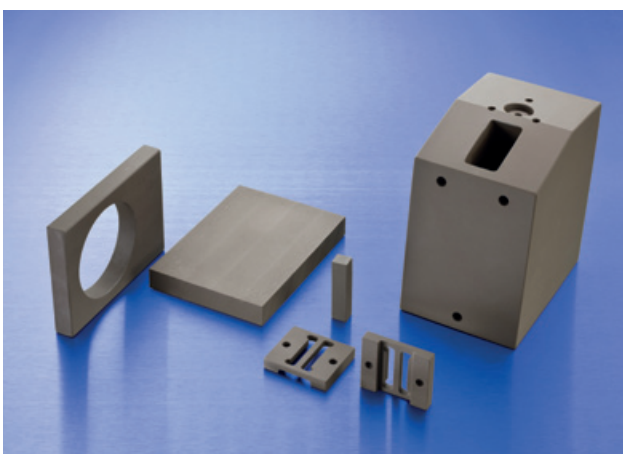


### 供热和热能工程

- 工业热风扇的核心加热元件
- 高温应用领域的电学绝缘
- 高性能火炉、热风机、烘干机等核心加热元件
- 燃气供暖器的点火器喷嘴
- 煤气灶中用于减少氮氧化物的火焰冷却杆
- 用于点燃气料混合物的点火管
- 用于香气和杀虫剂排放实验的挥发芯
- 用于化学实验室样本测试的陶瓷芯

### Heating and Thermal Engineering

- Heating element cores for industrial hot-air fans
- Electrical insulators for high temperature applications
- Heating element cores for high-performance furnaces, fan heaters, tumble dryers, etc.
- Pilot jets for flame guidance in gas heaters
- Flame cooling rods for NOX reduction in gas burners
- Ignitor tubes for igniting air/fuel mixtures
- Evaporation wicks for fragrances and insecticide emission testing
- Rods for chemical lab specimen tests



### 精密工程

- 高精度壳体 and 引导部件
  - 基座
  - 传感臂
  - 测量探针支架
  - 导轨/滑轨
  - 轴套
- 支撑零件 (高温应用中的垫片)

### Precision Engineering

- High precision housings and guide components
  - Bases
  - Sensing arms
  - Holders for measuring probes
  - Guideways / sliding rails
  - Spindle sleeves
- Support elements (spacers for high-temperature applications)



The measured values mentioned before were determined for test samples and are applicable as standard values. The values were determined on the basis of DIN-/DIN-VDE standards and if these were not available, on the basis of CeramTec standards. The values indicated must not be transferred to arbitrary formats, components or parts featuring different surface qualities. They do not constitute a guarantee for certain properties. We expressly reserve the right to make technical changes.

**CeramTec GmbH**

Luitpoldstraße 15  
91207 Lauf  
Germany

**CeramTec Suzhou Ltd.**

中国苏州工业园区钟南街428号  
Suzhou Industrial Park  
215026 Suzhou City, 中国  
电话: +86 (0) 512 6262 1013  
sales@ceramtec.com.cn  
www.ceramtec.cn